

Time of Occurrence

Figures 2.1 to 2.3 show the frequency of 2007 traffic collisions, injuries and deaths as compared to a three-year average. It is not unusual to see more fluctuations in the monthly averages in the smaller numbers, such as deaths, than the larger numbers of total collisions.

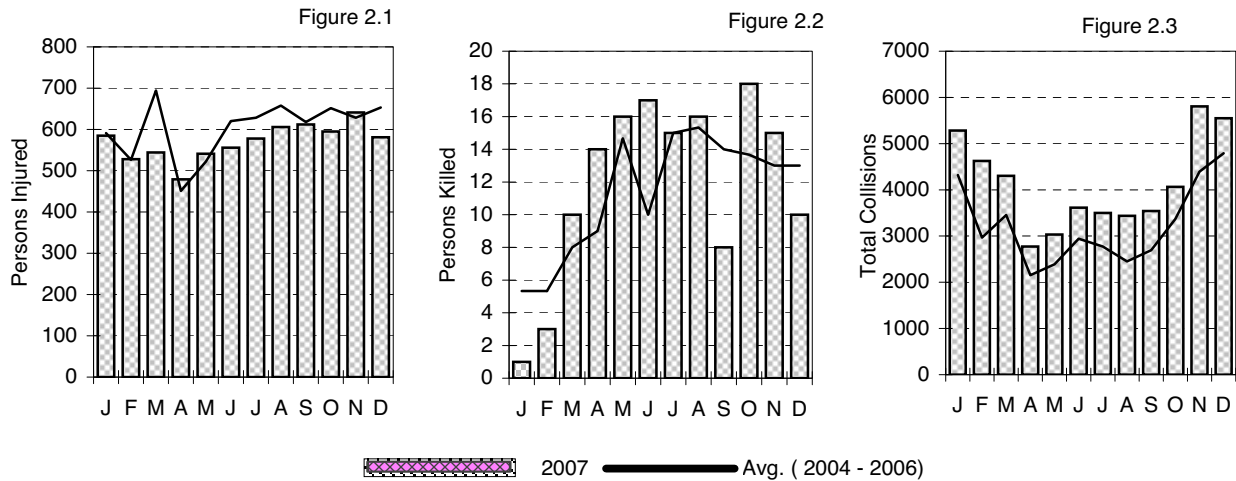
Figures 2.4 and 2.5 show the collision ratio of travel versus collisions on provincial highways. The risk of being involved in a rural collision is highest between the hours of 4 and 6 a.m.

Table 2.2 shows the number of collisions on public holidays and long weekends throughout the year, as well as other specific periods of interest.

Table 2.3 shows the number of collisions occurring by day of week and hour of occurrence on all road systems. The highest frequency of traffic collisions during 2007 occurred Friday afternoons between the hours of 4 and 5 p.m.

Time of Occurrence – SECTION 2

Collisions and Victims by Month of Occurrence



Collisions and Victims by Month of Occurrence

Table 2.1

Month	Number of Collisions				Number of Victims	
	Property Damage	Personal Injury	Fatal	Total	Injured	Killed
January	4,813	468	1	5,282	585	1
February	4,225	398	3	4,626	528	3
March	3,875	417	10	4,302	544	10
April	2,434	328	12	2,774	479	14
May	2,627	392	12	3,031	541	16
June	3,206	394	14	3,614	556	17
July	3,056	430	13	3,499	578	15
August	2,988	433	15	3,436	606	16
September	3,073	459	8	3,540	612	8
October	3,641	407	16	4,064	595	18
November	5,318	473	13	5,804	641	15
December	5,121	421	9	5,551	581	10
Total	44,377	5,020	126	49,523	6,846	143

Collisions During 2007 Holiday Periods

Table 2.2

Holiday Period		Number of Collisions				Number of Victims	
		Property Damage	Personal Injury	Fatal	Total	Injured	Killed
Family Day, Feb 16 - Feb 19	(Fri - Mon)	384	43	0	427	60	0
Imp Driving Awareness, Mar 5-11	(Sun - Sat)	834	95	2	931	129	2
Easter, Apr 14 - Apr 17	(Fri - Mon)	277	31	0	308	45	0
Victoria Day, May 19 - 22	(Fri - Mon)	431	61	3	495	81	3
Canada Day, June 30 - Jul 3	(Fri - Mon)	441	57	3	501	84	3
Heritage Day, Aug 4 - Aug 7	(Fri - Mon)	374	44	1	419	64	1
Labour Day, Sept 1 - Sept 4	(Fri - Mon)	329	54	1	384	72	1
Thanksgiving Day, Oct 6 - 9	(Fri - Mon)	459	42	4	505	78	4
Remembrance Day, Nov 10 - 13	(Fri - Mon)	577	65	3	645	89	3
Safe Driving Week, Dec 1 - 7	(Fri - Thur)	1,373	101	1	1,475	133	1
Christmas Holidays, Dec 22 - 26	(Fri - Tues)	798	59	2	859	88	2
Total		6,277	652	20	6,949	923	20

Time of Occurrence – SECTION 2

Figure 2.4

Provincial Highway Collisions and Travel by Time of Day

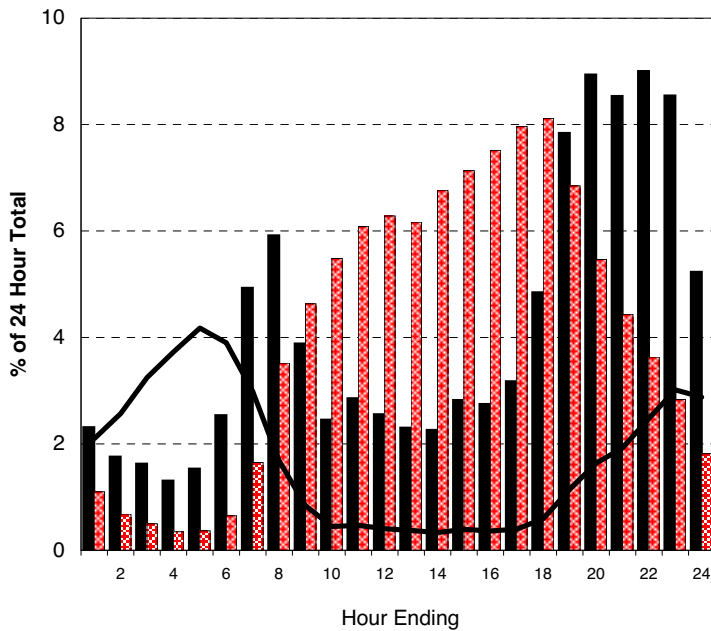
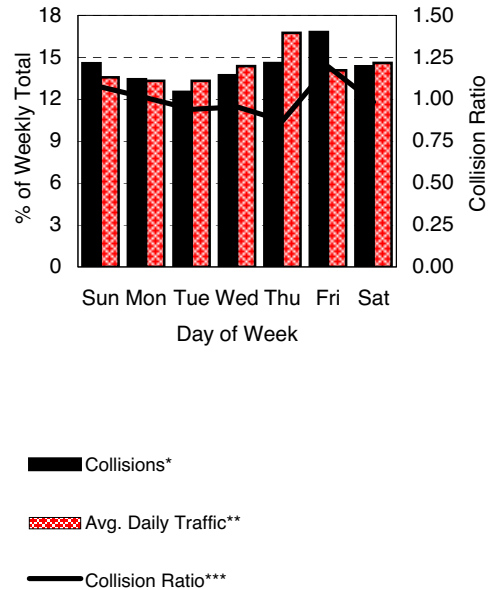


Figure 2.5

Provincial Highway Collisions and Travel by Week Day



* Collisions on Provincial Highways ** Traffic On Provincial Highways *** Per cent Collisions/Per cent Traffic

Collisions on All Roads by Time of Day and Day of Week

Table 2.3

Collision Hour	Sun	Mon	Tues	Wed	Thurs	Fri	Sat	Total	%
12 to 1 a.m.	233	132	113	120	146	178	264	1,186	2.4
1 to 2 a.m.	179	78	67	65	71	100	210	770	1.6
2 to 3 a.m.	221	75	47	75	78	114	182	792	1.6
3 to 4 a.m.	139	66	40	49	59	65	178	596	1.2
4 to 5 a.m.	101	56	44	42	44	70	106	463	0.9
5 to 6 a.m.	88	109	76	58	94	84	110	619	1.2
6 to 7 a.m.	122	220	178	212	206	173	128	1,239	2.5
7 to 8 a.m.	118	347	365	371	380	343	156	2,080	4.2
8 to 9 a.m.	117	345	398	443	480	406	187	2,376	4.8
9 to 10 a.m.	143	242	228	267	283	251	223	1,637	3.3
10 to 11 a.m.	206	288	288	295	296	333	294	2,000	4.0
11 a.m. to 12 p.m.	205	290	306	303	328	387	296	2,115	4.3
12 to 1 p.m.	265	368	450	469	419	480	317	2,768	5.6
1 to 2 p.m.	265	323	336	386	383	407	358	2,458	5.0
2 to 3 p.m.	288	331	355	388	408	456	417	2,643	5.3
3 to 4 p.m.	306	456	473	540	454	594	364	3,187	6.4
4 to 5 p.m.	294	471	500	548	555	599	348	3,315	6.7
5 to 6 p.m.	296	440	504	561	573	567	349	3,290	6.6
6 to 7 p.m.	318	411	428	486	446	488	414	2,991	6.0
7 to 8 p.m.	365	388	353	403	412	525	419	2,865	5.8
8 to 9 p.m.	400	345	319	345	383	498	388	2,678	5.4
9 to 10 p.m.	415	310	341	343	391	455	385	2,640	5.3
10 to 11 p.m.	300	261	288	301	321	474	408	2,353	4.8
11 p.m. to 12 a.m.	218	156	191	205	204	367	358	1,699	3.4
Not Stated	122	105	91	93	88	130	134	763	1.5
Total	5,724	6,613	6,779	7,368	7,502	8,544	6,993	49,523	
Per cent	11.6	13.4	13.7	14.9	15.1	17.3	14.1		100